

M78 Dryer Specifications

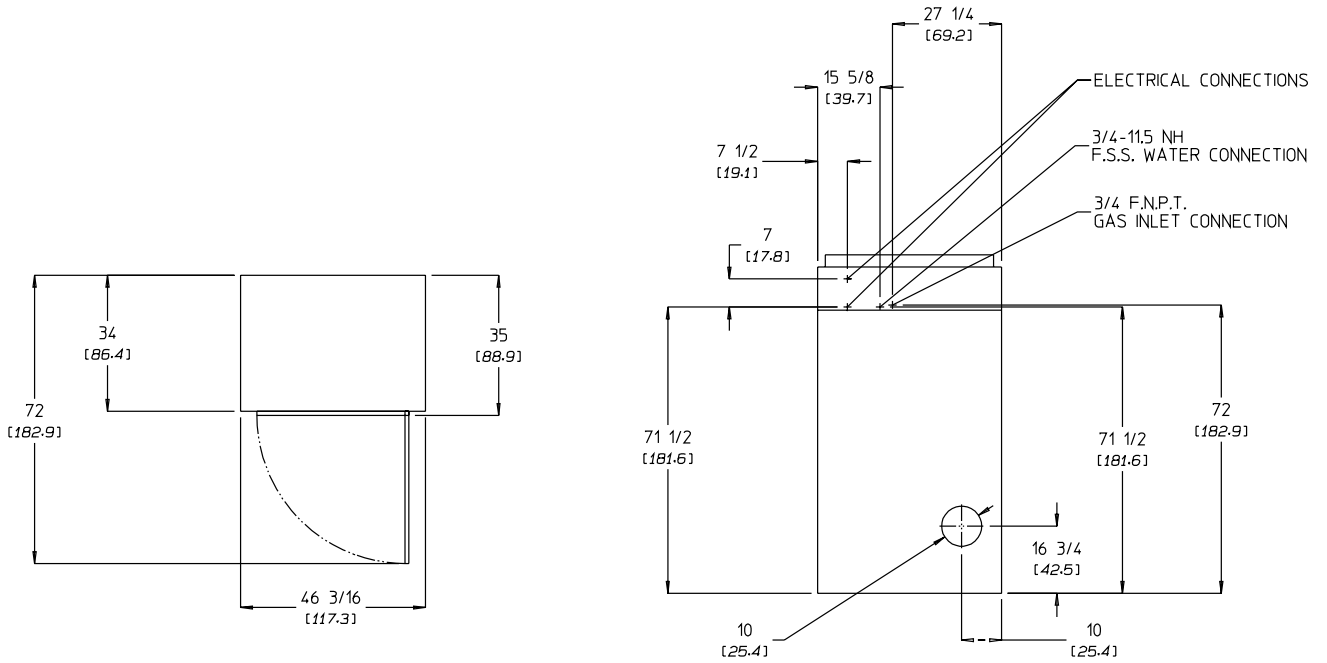
MAXIMUM CAPACITY (DRY WEIGHT)		75 lbs	34 kg
BASKET (TUMBLER) DIAMETER		44-1/2"	113.03 cm
BASKET (TUMBLER) DEPTH		24-7/8"	63.18 cm
BASKET (TUMBLER) VOLUME		22.4 cu ft	0.634 cu m
BASKET (TUMBLER) MOTOR		1 hp	0.746 kW
DOOR OPENING (DIAMETER)		31-3/8"	79.7 cm
F.S.S. WATER CONNECTION		3/4-11.5 NH	
DRYERS PER 20'/40' CONTAINER		8/18	
DRYERS PER 48'/53' TRUCK		24/26	
Gas	VOLTAGE AVAILABLE	120-480v 1, 3Ø 50/60 Hz	
	APPROX. NET WEIGHT	888 lbs	402.8 kg
	APPROX. SHIPPING WEIGHT	938 lbs	425.5 kg
	HEAT INPUT	204,000 Btu/hr	51,408 kcal/hr
	AIRFLOW	1,200 cfm	33.98 cmm
	INLET PIPE CONNECTION	3/4" F.N.P.T.	

110503

M78 Dimensional Specifications

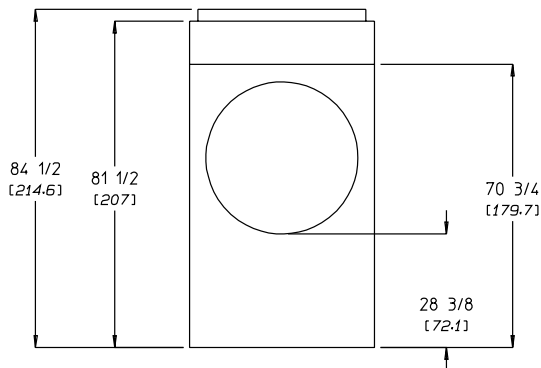
DRYER NOTES:

- ° A MINIMUM OF 3/4 in PIPE MUST BE SUPPLIED TO THE GAS INLET FOR EACH DRYER, SIZE OF PIPING TO DRYER VARIES WITH INSTALLATION CONDITIONS.
- ° TOP SECTION CAN BE REMOVED FOR EASY INSTALLATION. WITH TOP MODULE REMOVED THE HEIGHT OF THE CABINET IS REDUCED TO 70 3/8 in. (178.75 cm).
- ° 3 in (7.62 cm) HIGH COVER PANEL IS REMOVABLE FOR EASE OF INSTALLATION, REDUCING THE CABINET HEIGHT TO 81 1/2 in (207 cm).
- ° DUCTWORK SIZE VARIES WITH INSTALLATION CONDITIONS.
- ° EXHAUST STATIC PRESSURE MUST BE NO LESS THAN 0 AND MUST NOT EXCEED 0.3" (0.74 MB) WATER COLUMN.



PLAN VIEW

REAR VIEW



FRONT VIEW

KLAMBERT 9/22/03